

VTL PNEUMATIC VIBRATORS

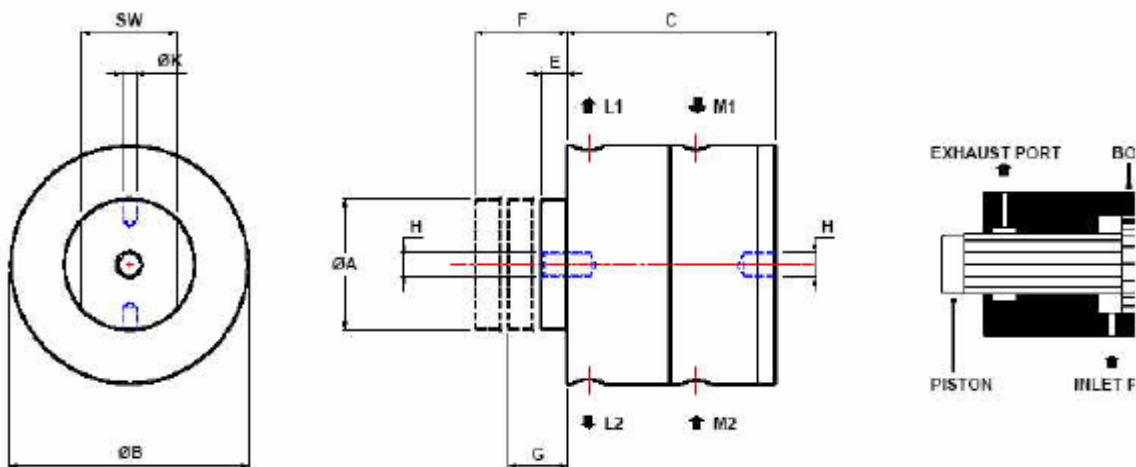
1.PICTURE:



2.CHARACTERISTIC:

- Low operating cost
- Low noise level
- Adjustable frequency and amplitude
- Starts in any position

3.DIMENSIONS:



Model	A	B	C	E	F	G	H	K	L1	L2	M1	M2	SW	Weight Kgs
VTL 155	16.0	50	114	9	43	24	M10	-	1/8"	-	1/8"	-	13	0.52
VTL 165	16.5	49	111	5	40	22.5	M10	-	1/8"	-	1/8"	-	14	1.49
VTL 255	25.5	64	140	9	54	36.5	M16	-	1/4"	-	1/4"	-	22	3.19
VTL 405	40.5	84	140	12	57	36.0	M16	-	1/4"	-	1/4"	-	32	5.47
VTL 555	55.5	115	125	17	54.7	36.8	M20	-	3/8"	-	3/8"	-	46	7.82
VTL 855	85.5	160	122	20	54.7	36.8	M20	12.7	3/8"	3/8"	3/8"	-	-	16.91
VTL 1105	110.5	200	122	22	54.7	36.8	M20	12.7	1/2"	1/2"	3/8"	3/8"	-	25.83

VTL PENUMATIC VIBRATORS

5.FEATURE:

Model	Frequency VPM	Force N		Air Consumption litre/min
	max.	min.	max.	max.
VTL 155	2600	39	110	90
VTL 165	2600	39	185	75
VTL 255	1900	90	720	200
VTL 405	1900	220	1450	408
VTL 555	2400	510	2640	755
VTL 855	2500	845	7740	924
VTL 1105	2900	1760	5980	960