

BMF SERIES FLANGED VIBRATORS

Since 1972 OMB is specialized in designing and manufacturing electric and pneumatic vibrators which meet the specifications required by most fields of application using vibrating equipment. The superior quality and reliability of the OMB vibrators are the result of over thirty-years of vast experience in addition to continuous and constant research and innovation. The most up-to-date training remains a constant in every level of our organisation.

BMF FLANGED SERIES VIBRATOR have studied and realized for applications on big machines ,such as circular vibrating screens and vibrating finishing machines.

1.PICTURE:



2.CHARACTERISTIC:

Standard type 4 poles 50Hz or 6 poles 60Hz;

BF50、BF70 size have electric motor protection through thermistor (ptc)

On request for remaining sizes;

Considering the subjective use, the eccentric weights are not part of basic execution of the BMF vibrators.

OMB can supply special weights on request;

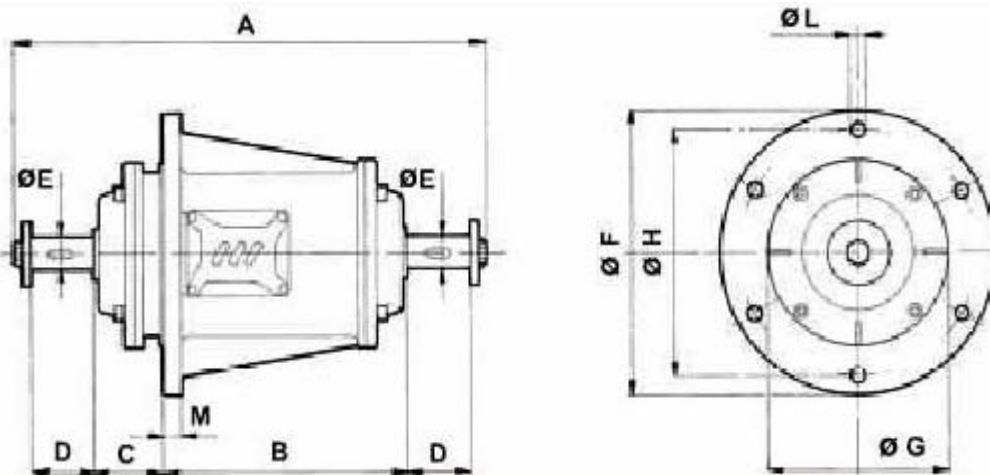
Mechanical seals with low friction,which guarantee a perfect protection;

Over-dimensioned bearings to guarantee the max.reliabilityfor the application in vertical axle

On request:

2P、6P vibrators; two speeds electric motors: 3000/1500RPM、

3.DIMENSIONS:



CODICE CODE CODE KODE	TIPO TYPE TYPE TYP	GRAND. SIZE GRAND. GRÖSSE	DIMENSIONI D'INGOMBRO OVERALL DIMENSIONS COTES DIMENSIONS ABMESSUNGEN (mm)					DIMENSIONI DI FISSAGGIO FIXING DIMENSIONS DIMENSIONS FIXATIONS ABMESSUNGEN ZUR BEFESTIGUNG (mm)					
			A	B	C	D	∅ E	∅ F	∅ G	∅ H	FORI HOLES	∅ L	M
BF15-0150 BF10-0130	BMF 1500/15 BMF 1300/10	BF15	484	251	51	71	40	290	180	250	6	17	12
BF15-0300 BF10-0300	BMF 3000/15 BMF 3000/10	BF30	552	297	73	71	40	350	230	305	6	22	20
BF15-0500 BF10-0500	BMF 5000/15 BMF 5000/10	BF50	596	340	70	71	52	400	250	355	6	23	22,5
BF15-0700 BF10-0700	BMF 7000/15 BMF 7000/10	BF70	676	390	100	71	52	508	312	438	8	25	25

BMF SERIES FLANGED VIBRATORS

4.ELECTRIC FEATURES:

CODICE CODE CODE KODE	TIPO TYPE TYPE TYP	GRAND. SIZE GRAND. GRÖSSE	CARATTERISTICHE MECCANICHE MECHANICAL FEATURES CARACTERISTIQUES MECANIQUEES MECHANISCHE DATEN					CARATTERISTICHE ELETTRICHE ELECTRICAL FEATURES CARACTERISTIQUES ELECTRIQUES ELEKTRISCHE DATEN					
			rpm rpm tr/min min-1		激振力 kg		重量 kg	POTENZA NOM. INPUT POWER PUISSANCE NOM. NENNLEISTUNG (W)		CORR. NOM. NOM. CURRENT COURANT NOM. NENNSTROM (A)		RAPP. IA/IN IS/IN RATIO RAPP. ID/IN IA/IN VERH.	
			50Hz	60Hz	50Hz	60Hz	50Hz - 60Hz	50Hz	60Hz	400V 50Hz	460V 60Hz	50Hz	60Hz
BF15-0150	BMF 1500/15	BF15	1	1	1500	1500	35	1200	1250	2,2	2	4,2	4,7
BF15-0300	BMF 3000/15	BF30	5	8	3000	3000	76	2750	3150	4,8	4,8	5,05	5,45
BF15-0500	BMF 5000/15	BF50	0	0	5000	5000	103	4000	4000	6,6	5,9	3,4	3,8
BF15-0700	BMF 7000/15	BF70	0	0	7000	7000	182	7000	7000	11,2	9,8	5,6	5,9
BF10-0130	BMF 1300/10	BF15	1	1	1300	1300	35	800	900	1,6	1,6	3,4	4
BF10-0300	BMF 3000/10	BF30	0	2	3000	3000	76	1900	2000	4,4	4,2	4,8	5,15
BF10-0500	BMF 5000/10	BF50	0	0	5000	5000	103	2800	3000	5,5	5,5	5,3	5,3
BF10-0700	BMF 7000/10	BF70	0	0	7000	7000	182	5100	6000	9,5	9,5	5,1	5,3